

Ted Larsen

tedlarsen.com



Ted Larsen (b. 1964, USA) is an internationally exhibiting artist and Pollock-Krasner Foundation recipient with a BA from Northern Arizona University. The work he creates supply commentary on minimalist belief systems and the ultimate importance of High Art practice. Since 2001, Larsen has used alternative and salvage materials in his studio exercises.

Ted Larsen's work has been exhibited widely in private foundations and museums in the US, including the New Mexico Museum of Art in Santa Fe, The Albuquerque Museum, The Amarillo Museum of Art, The Spiva Center for the Arts in Joplin, Missouri, and the Philadelphia Museum of Art as well as in over 100 gallery exhibitions.



sawtelle

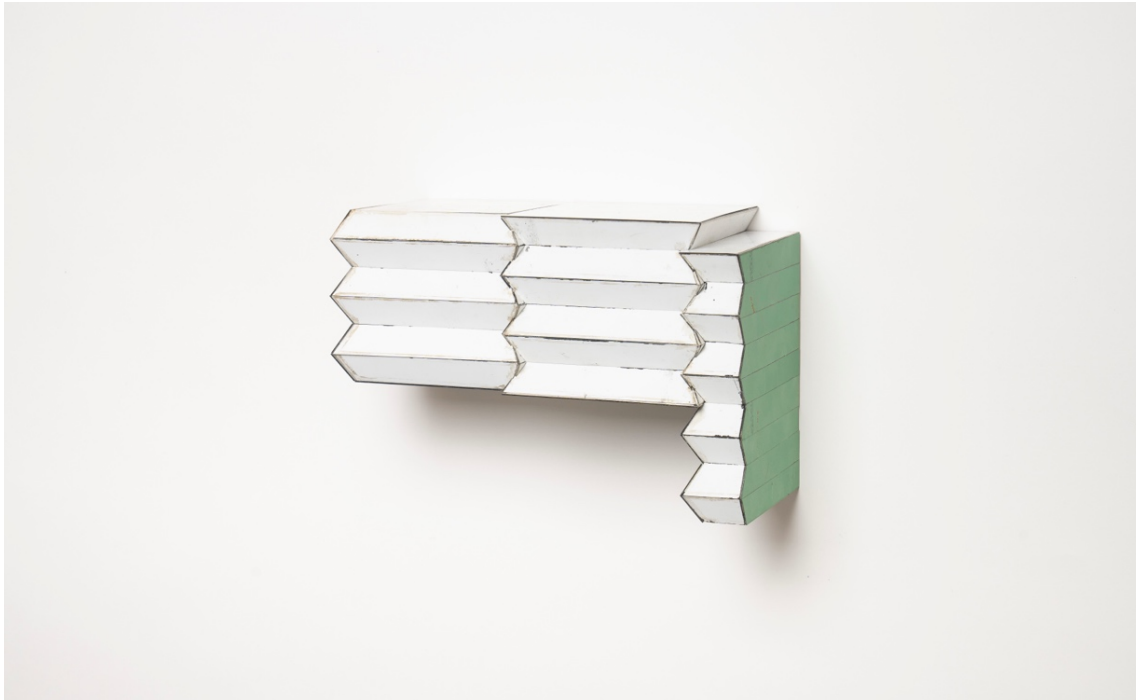
ART CONSULTING / DESIGN SERVICES



Steel Wool 11.25x6.75x2.625" —\$3500



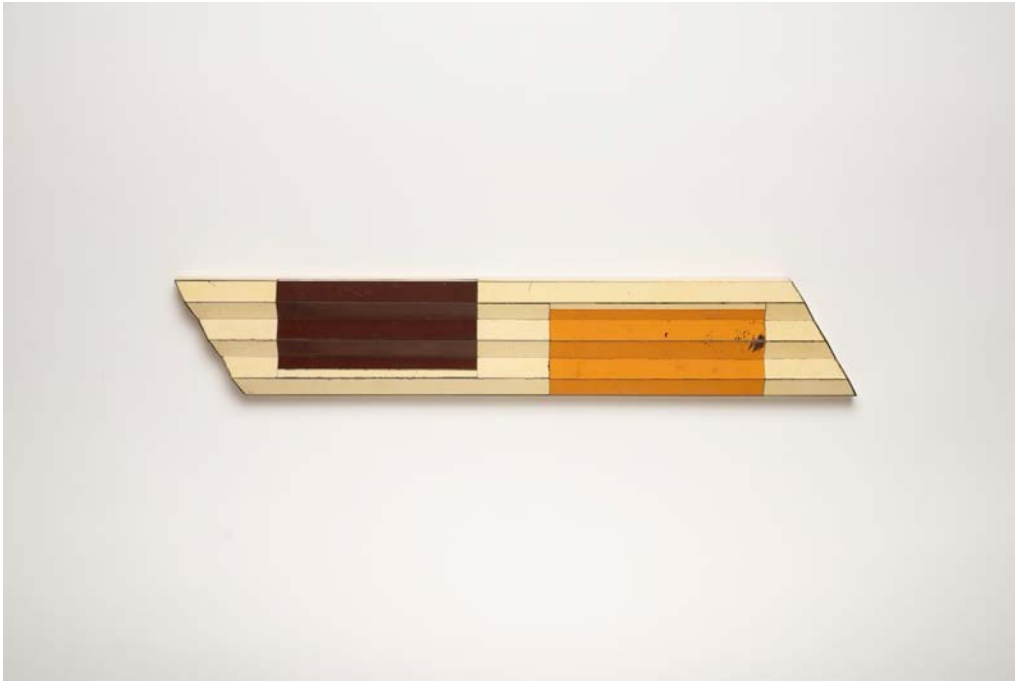
Boxed Out 4x4x2.5" —\$800



Past Prediction 7x10.125x4.5" —\$4500



Partial Conclusion 6.125x7.5x4.5" —\$4000



Recent History 4.375x25.5x1.625" —\$4500



Bitter Sweet 6.5x10x4.5" —\$4500



Steel Wool II
9.25x10.875x2.75" —\$4500



Huge Shortage
9x9.5x3.5" —\$4000

McKay Otto

www.mckayottoart.com

Time stretches and fades away in a McKay; inspired by the artist's early experiences of growing up in Texas on the outskirts of fast-growing Houston, and raised with an appreciation for the arts, McKay has many fond childhood memories of playing the piano, drawing on white flour sacks in his Father's Farmers Market, and visiting art museums with his parents.

McKay works in his studios near Austin, TX and Santa Fe, NM. His work deals with the themes of the Tao, reflected light, color, simplicity and silence in his sculp/paintings.

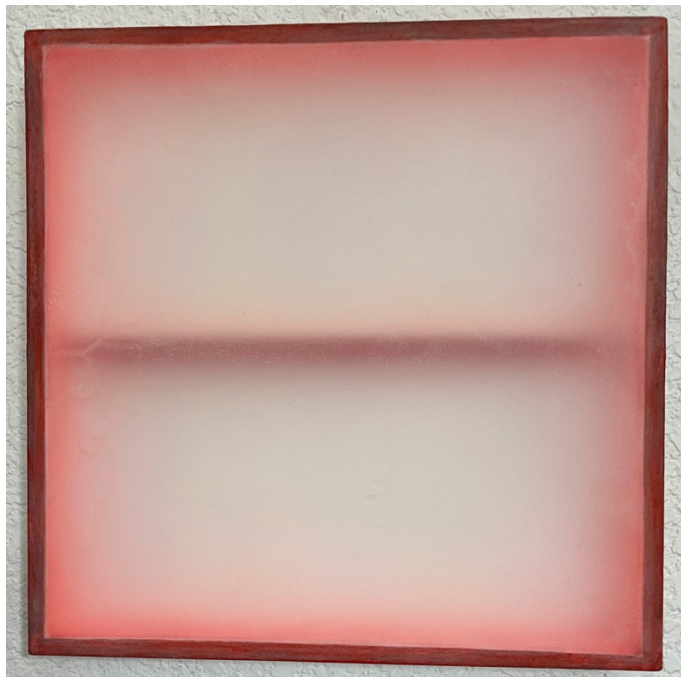
He has enjoyed exhibiting his work in Texas metropolitan areas as well as in NYC, Chicago, Denver, New Orleans, Santa Fe, Santa Barbara, and Aspen. He has a degree from UT Austin and has studied art and art history at the MFA Houston's Glassell School and received inspiration through interaction with such luminaries as Agnes Martin.





sawtelle

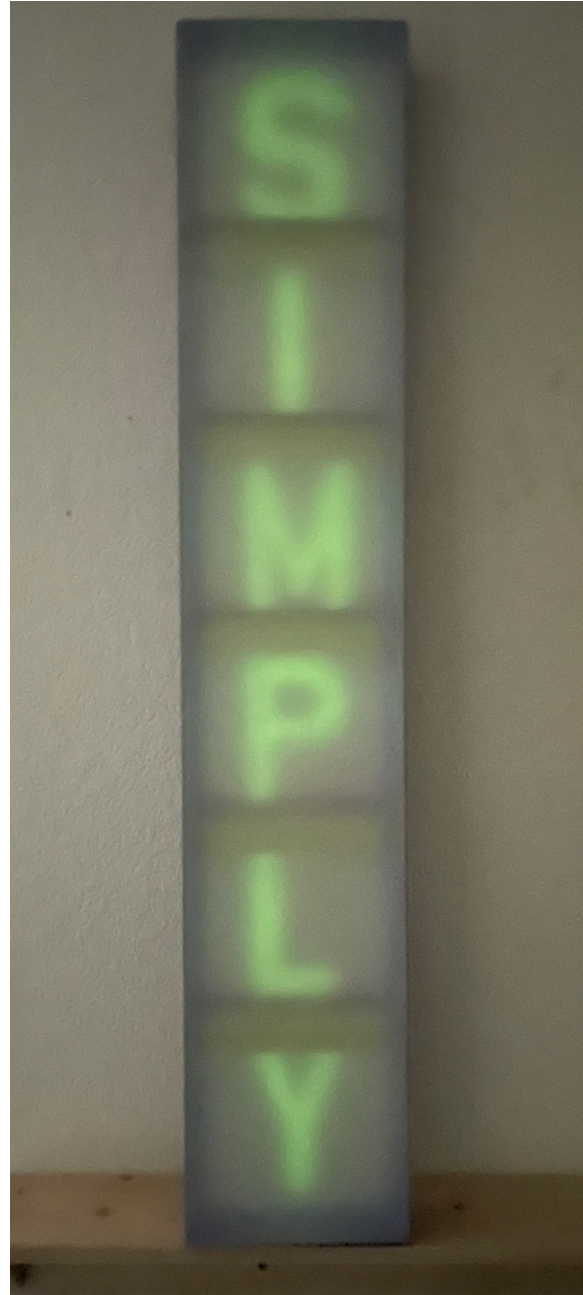
ART CONSULTING / DESIGN SERVICES



Ever To Be Ever

2023, 12x12" —\$1800





EverSimplyWhatEver
2023, 9x48" —\$5800

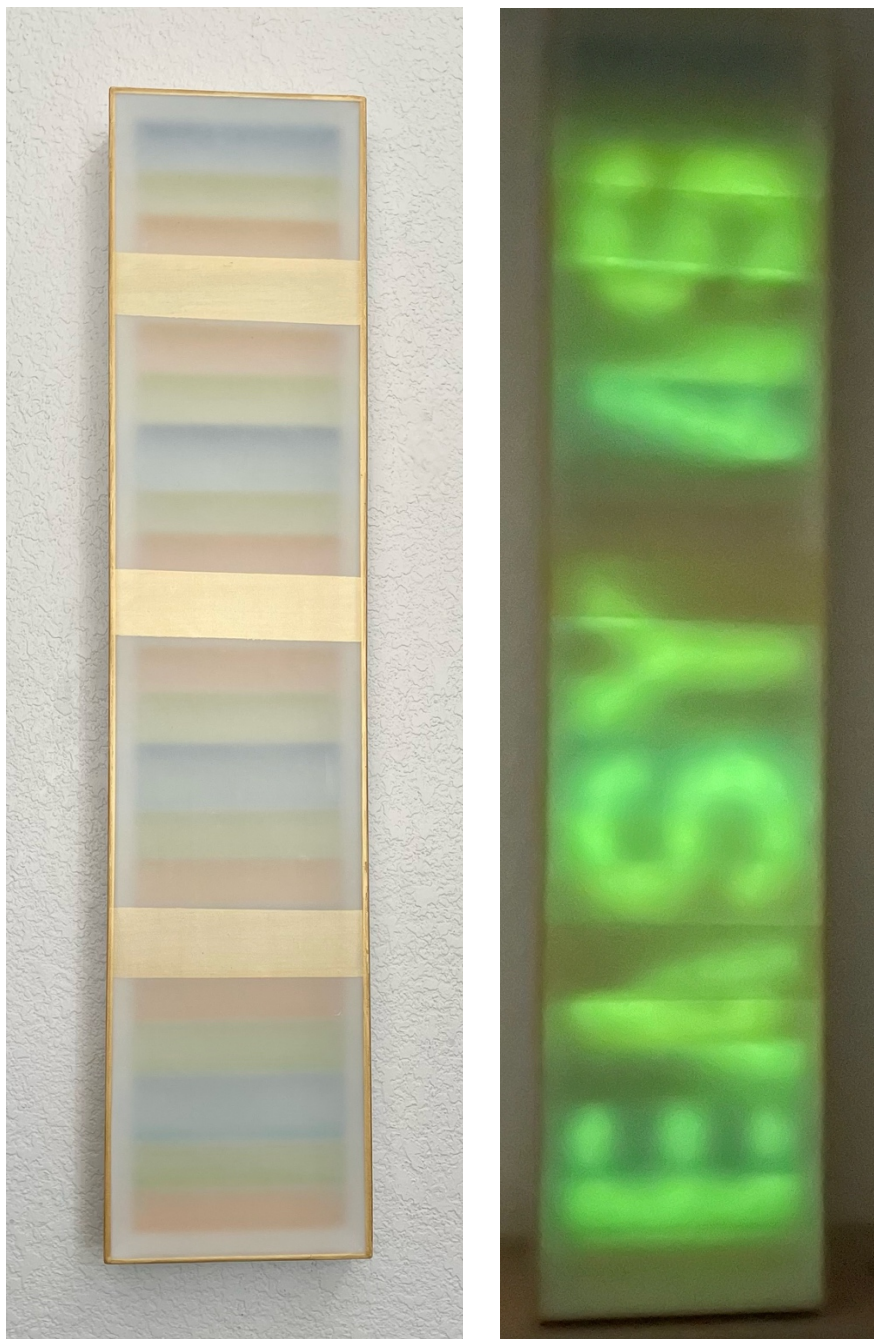


sawtelle

ART CONSULTING / DESIGN SERVICES



Ever It Ever
2023, 16x12" —\$2200



Ever Easy As Ever
2023, 8x36" —SOLD



sawtelle

ART CONSULTING / DESIGN SERVICES



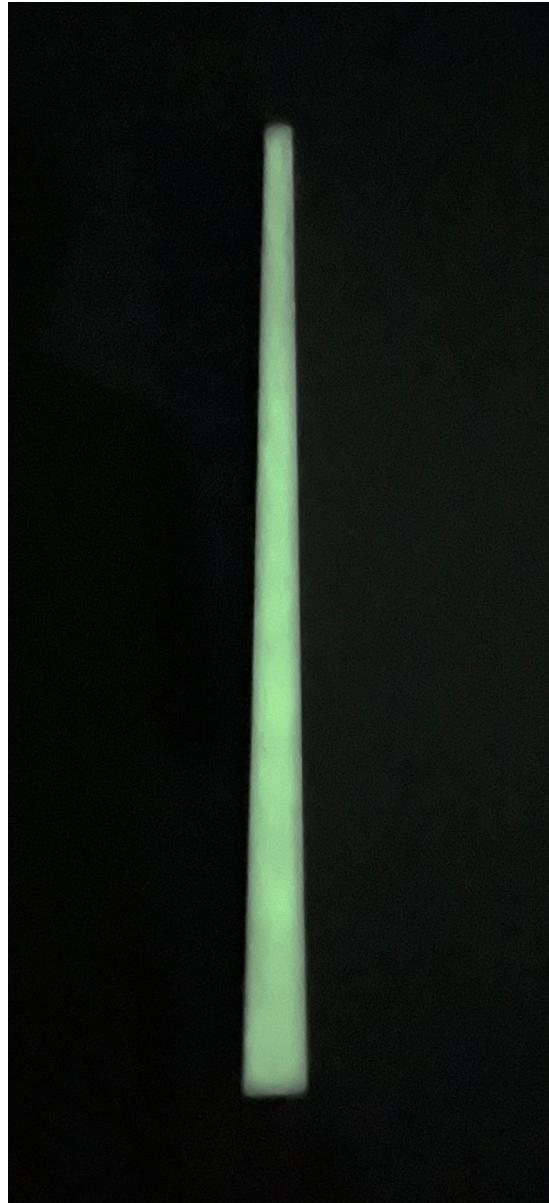
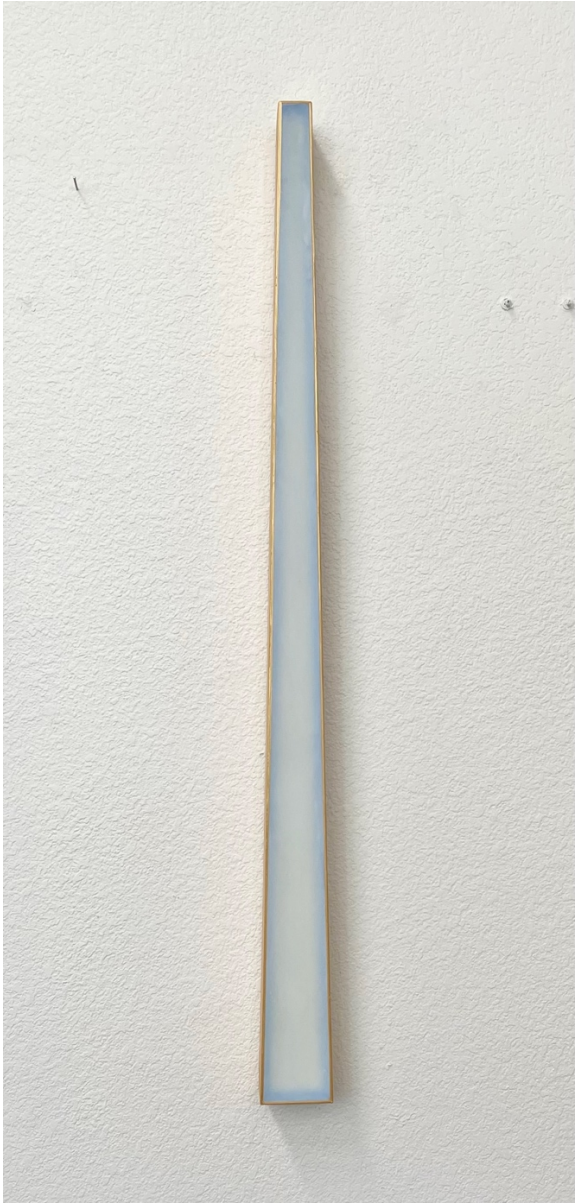
Ever Point To Ever

2025, 4x72" —\$7000



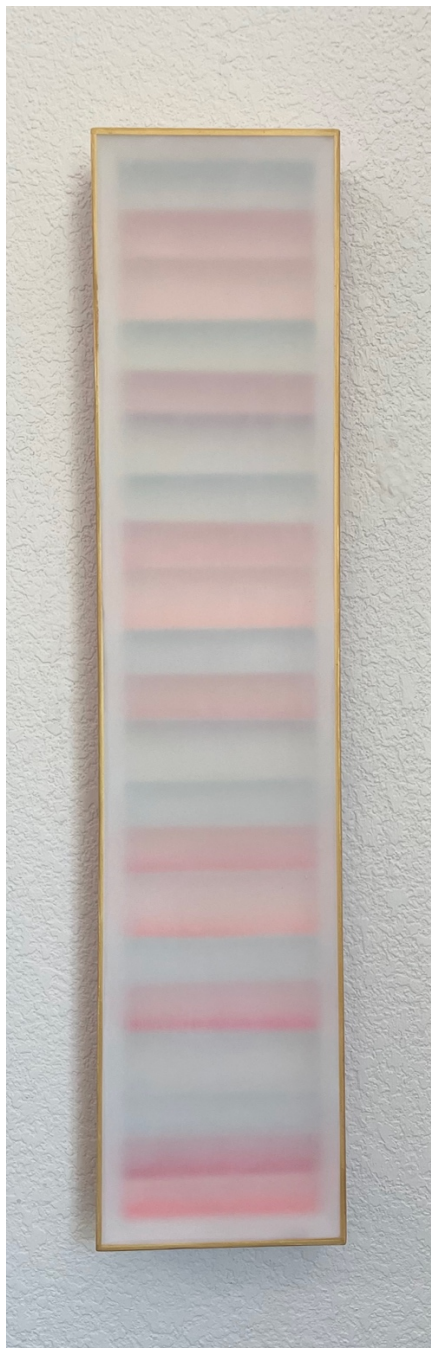
sawtelle

ART CONSULTING / DESIGN SERVICES



Ever Point To Ever #2

2025, 4x48" —\$4000



Ever Choice Ever
2023, 8x36" —\$4500

Stella Alesi

www.alesiart.com

“I work across a number of styles and mediums, including drawing, painting, sculpture and large wall works. My practice is characterized by a willingness to try new approaches in the ongoing investigation into new materials and visual languages. My painting practice emphasizes the importance of failure as a way of moving forward and challenging established structures. I use the space and exploration the work provides to visualize the visceral nature of the human experience.”

Stella Alesi has resided in Austin, Texas for the past 32 years. Their work has been purchased by many private and commercial collections throughout the country. Alesi is represented by Artspace111 in Fort Worth TX, Northern-Southern Gallery in Austin, TX and the Tracey Morgan Gallery in Asheville, NC. A career highlight includes the permanent installation of the large-scale art piece, “Simplify” in the lobby of The Foundry in Austin, TX.



Born on Long Island, New York in 1963, Alesi was raised in New Jersey. They began their undergraduate work at Parsons School of Design in New York City, with stints in Paris and Los Angeles, and finished at the University of New Hampshire in Durham. Their graduate work was completed at the University of Massachusetts in Amherst.



Citizen One

2025, oil on oil paper applied to baltic birch
16" H x 10"W x 3.5"W —\$3200



Citizen Two

2025, oil on oil paper applied to baltic birch
20.25"H x 11.75"W x 3.5"D —\$3200



Citizen Three

2025, oil on oil paper applied to baltic birch
24"H x 13"W x 4.25"D — \$3600

Chad Kilgore

www.chadkilgore.com

Chad approaches his work from within outward. His work is a synthesis of his spirituality made into material objects. He believes all matter on Earth begins first as a thought—a vibration—and his goal is to capture those vibrations and bring them into the physical world with the highest possible clarity of vision. While his work is rooted in spirituality, it remains grounded in the realities of life. His goal is to evolve his work along with his own evolution, for whatever does not evolve will eventually devolve. For Chad there is no separation between making art and other aspects of his life. It is one fluid "Becoming"—a continuous process that has no separation between its different parts. It is all part of the evolution of his being working towards a greater wholeness and a more unified consciousness.

Chad's practice consists mainly of collage work. He enjoys building and layering to construct the true depth of his vision. When possible, he loves to use natural materials and pigments



from the Earth to produce color and texture. He believes this not only gives the work a richer appearance, but it also enhances the work's vibration.

Lastly and to him, most importantly, Chad believes art can serve as a vehicle for evolving human consciousness. It can push humanity upward to greater heights through direct and indirect means....and this is his highest aim.



sawtelle

ART CONSULTING / DESIGN SERVICES



Self Exceeding VII

2025, 48x60" —\$6400



Mandala IV
42" Diameter – \$4000



sawtelle

ART CONSULTING / DESIGN SERVICES

Amy Updegrove

www.amyupdegrove.com

Amy Banner Updegrove is a native Texan who has lived and worked in New York and Los Angeles. After studying art, design and advertising she worked in media and fashion as the retail marketing director for Polo Ralph Lauren, the president of Los Angeles Magazine and the publisher of Texas Monthly.

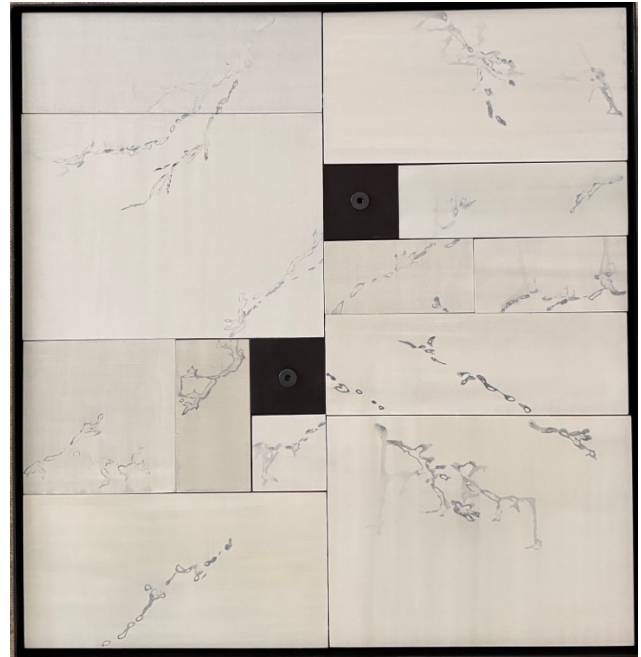
Informed by the visual elements used to communicate a mood, story, season or location, Amy creates mixed material, three-dimensional builds with grounding shapes, natural textures and resonate colors. The resulting patterns reflect our surroundings, both natural and man-made. Combinations of paper, fabric, metal, acrylic and leather highlight perceived differences based on light and viewpoint.





Sanctuary

Glazed birch and steel
26x28x2" —\$5000



Haven

Glazed birch and steel
26x28x2" —\$5000



sawtelle

ART CONSULTING / DESIGN SERVICES



Felicity 1/8

Glazed birch in maple

9x25x2" —\$1600



Felicity 2/8

Glazed birch in maple

9x25x2" —\$1600



Felicity 3/8

Glazed birch and steel in maple
7x25x2" — \$1400



Felicity 4/8

Glazed birch in maple
7x25x2" — \$1400



Felicity 5/8

Glazed birch and steel in maple
7x25x2" — \$1400



Felicity 6/8
Glazed birch in maple
7x25x2" —\$1400



Felicity 7/8
Glazed birch in maple
7x25x2" —\$1400



Felicity 8/8
Glazed birch in maple
7x25x2" —\$1400



sawtelle

ART CONSULTING / DESIGN SERVICES



Doyenne

Glazed birch in suede with zinc tack
36.5x36.5x1.75" —\$9000



Unison

Glazed birch in suede and maple
9x11x2" —\$1100



Harmony

Glazed birch in suede and maple
9x11x2" —\$1100